



# Cloud Hosted Network Services

By using our industry-leading Wi-Fi cloud solutions, organisations reduce infrastructure costs, while improving scalability, flexibility and security. Suitable for spanning multiple geographic locations with tens of thousands of concurrent users.

## SmartZone

Network management and control

## GuestManager

Powerful guest access solution

## SmartCell Insight

Wi-Fi analytics and reporting solution

## IoT Manager

Internet of Things Management

## CloudPath

Security and on-boarding solution

## Ruckus SPoT

Wi-Fi Location based services (LBS) solution



# SmartZone

**Network management and control** with SmartZone acting as a wired and wireless controller for Ruckus networks, providing Networking-as-a-Service (NaaS). The service offers a scalable cloud-based enterprise wired and Wi-Fi management to organisations of all sizes.

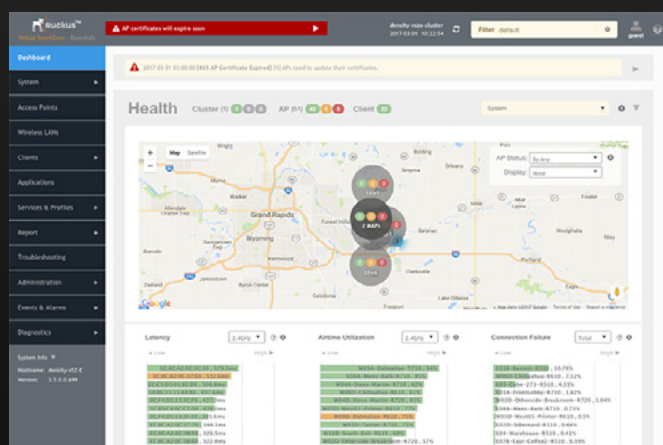


## Network Cloud Controller

- Converged management dashboard for your wired and Wi-Fi infrastructure
- Manage thousands of Wi-Fi Access Points across multiple locations
- Easily configure and manage your wired network switch infrastructure
- Use Role-Based Policy Management to secure wired and Wi-Fi clients
- Visually troubleshoot and quickly pinpoint client connection issues

## Features

- Intuitive user experience making administration easy
- Advanced content filtering out of the box
- Role-based policy management for added security
- Indoor and outdoor maps to easily troubleshoot
- Layer 7 application visibility and control
- Simple to use report generation and export facility



**SmartZone**



**Cloudpath**



**GuestManager**



**SmartCell Insight**



**Ruckus SPoT**



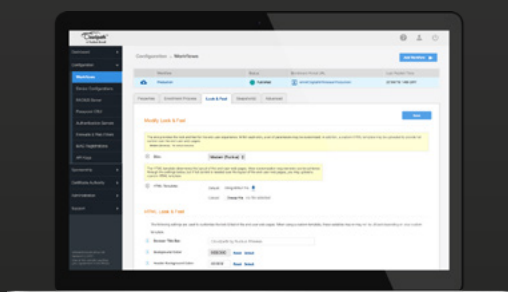
**IoT manager**



# CloudPath



**Security and on-boarding Solution** that will take your Wi-Fi network security to the highest level with its built-in WPA-2 Enterprise certificate server and network access policy management. Say goodbye to insecure Wi-Fi that leaves security holes in your network.

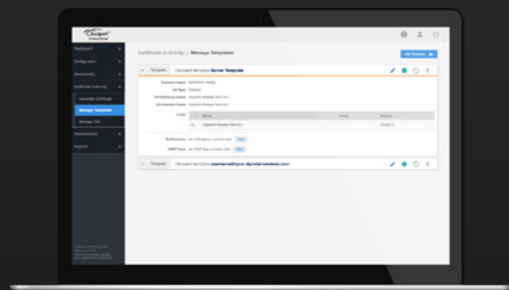


## Secure Onboarding

- Increases security for your network to the highest level
- Streamline onboarding for BYOD users, guests & owned devices
- Power to define and manage policies for role-based access
- Delivers visibility and control over devices on the network
- Dramatically help reduce desk tickets through network intelligence

## Features

- Secure Wi-Fi access via 802.1X authentication for IT-owned devices, BYOD and guests
- Self-service onboarding for users
- Built in certificate server, RADIUS server and user databases
- Granular role-based, per-user, per-device network access policies



## Device Support

Android, Apple iOS, Google Chrome, Windows OS, MAC OS X, Ubuntu, Fedora, Windows Phone.

## Authentication

802.1X (EAP-TLS), Web authentication, MAC authentication, EAP-SIM for iOS, Radius CoA, OAuth 2.0, DPSK for Ruckus WLAN.

## Identity Support

Microsoft Active Directory, Radius via PAP, Any LDAP compliant directory, Novell, Internal user database.



**SmartZone**



**Cloudpath**



**GuestManager**



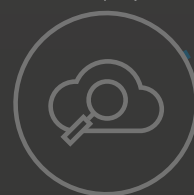
**SmartCell Insight**



**Ruckus SPoT**



**IoT manager**



# GuestManager

**Powerful guest access solution** that will improve your customer's experience and increase brand exposure using our guest access solution providing customised branding, data capture and multiple login options. Whether your objective is to monetise your Wi-Fi or enhance your customers experience.

## Powerful Guest Access

- Secure guest access (Encrypted Connection)
- Highly customisable portal
- Self-registered guest access via SMS or email
- Voucher based access
- Sponsored employee access
- Content filtering



## Secure Guest Access

GuestManager is the best solution today that can offer secure access and onboarding for your guests.

## Customisable Portal

Promote your brand by customising your portal with our highly customisable portal configurator.

## Secure Guest Access

Allow guests to register and receive their secure credentials either via email or sms for that extra layer of security.

## Voucher Based Access

Use our simple to manage voucher system to control access for your guests.

## Sponsored Employees

Control granular guest access through our "Sponsored Employee Guest" solution.

## Content Filtering

Control the content you want to allow your guests to access using clever content filtering.



**SmartZone**



**Cloudpath**



**GuestManager**



**SmartCell Insight**



**Ruckus SPoT**



**IoT manager**



# SmartCell Insight

Wi-Fi analytics and reporting solution provides the intelligence you need to deliver a better mobile experience to your workforce and make informed business and operational decisions.



## Benefits

- Delivers visibility and insight into your wireless deployment with comprehensive network intelligence
- Automates network anomaly detection, saving IT time and accelerating problem remediation
- Reduces costs by letting you make the most of existing infrastructure

## Features

- Pre-packaged and customisable reports, dashboards and correlations
- Granular drill-down capability - to the level of individual sessions, clients and access points
- Predictive analytics powered by machine learning
- Three-year data storage capacity for up to 100,000 access points and millions of clients
- Open APIs for integration with business intelligence systems



SmartZone



Cloudpath



GuestManager



SmartCell Insight



Ruckus SPoT



IoT manager



# Ruckus SPoT

Take advantage of Wi-Fi beyond basic connectivity to improve operational efficiency and engage customers like never before. Send real-time travel updates, targeted promotions, and even classroom notes through footfall traffic and proximity analytics to enrich customer relationships.

## SPoT Point

Detects client locations in real-time through drop-pin analytics, with a range of 5-10 meters at 80% confidence. SPoT Point is well suited for high-density deployments. SPoT Presence services provide venues with low access point density with footfall analytics and device positioning at proximity accuracies.



## SPoT Presence

Uses proximity analytics to detect overall number of devices location to the nearest AP. SPoT Presence is a cost-effective solution with location analytics that is ideal for smaller venues with fewer APs.

## Promotion & Advertising

Provide targeted promotions and advertisements for deals at nearby shops and restaurants.

## Maps and Directions

Provide an interactive app highlighting the current location directly to a smart device.

## Lost Smart Devices

Track high value assets such as laptops, tablets, and audio-visual gear.



SmartZone



Cloudpath



GuestManager



SmartCell Insight



Ruckus SPoT



IoT manager



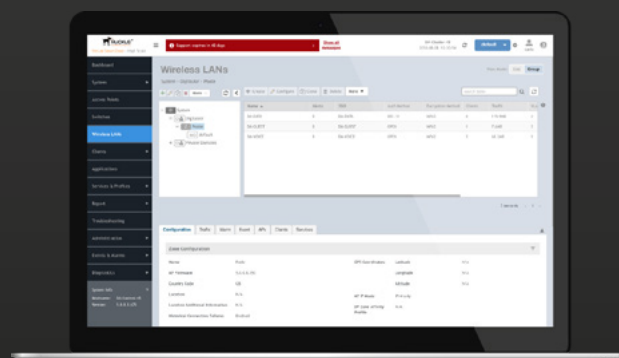


# IoT Manager

Simplify the creation of IoT access networks through the reuse of LAN and WLAN infrastructure, thus shortening deployment duration and reducing the cost to support multiple IoT solutions.

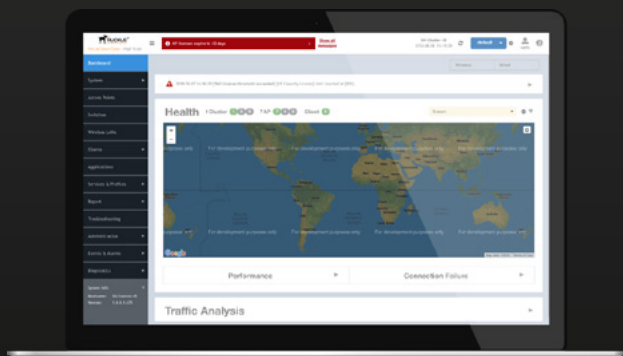
## IoT Manager

- Accommodate Ruckus IoT Modules to establish multi-standards wireless access for Wi-Fi and non-Wi-Fi IoT endpoints.
- Radio or radio-and-sensor devices that connect to a Ruckus IoT-ready AP to enable endpoint connectivity based on standards such as Bluetooth Low Energy (BLE), Zigbee and LoRa.



## Features

- Reuse Existing Infrastructure
- Consolidate Endpoint Management
- Multi-layered Protection
- Standards-based Security
- Simplify Device Onboarding
- Expedite Deployment
- Control Lighting
- Control climate
- Control Locks
- Provide smart parking
- Offer smart signage
- Manage all IoT devices from one dashboard



## Multi-layered protection

Security between each IoT suite component protects data-in-transit and guards against physical attacks.

## Simplify onboarding

Connect Wi-Fi and non-Wi-Fi IoT endpoints quickly with the Ruckus IoT Controller.

## Reuse infrastructure

Connect Wi-Fi and non-Wi-Fi IoT endpoints with a single wireless access network.



**SmartZone**



**Cloudpath**



**GuestManager**



**SmartCell Insight**



**Ruckus SPoT**



**IoT manager**